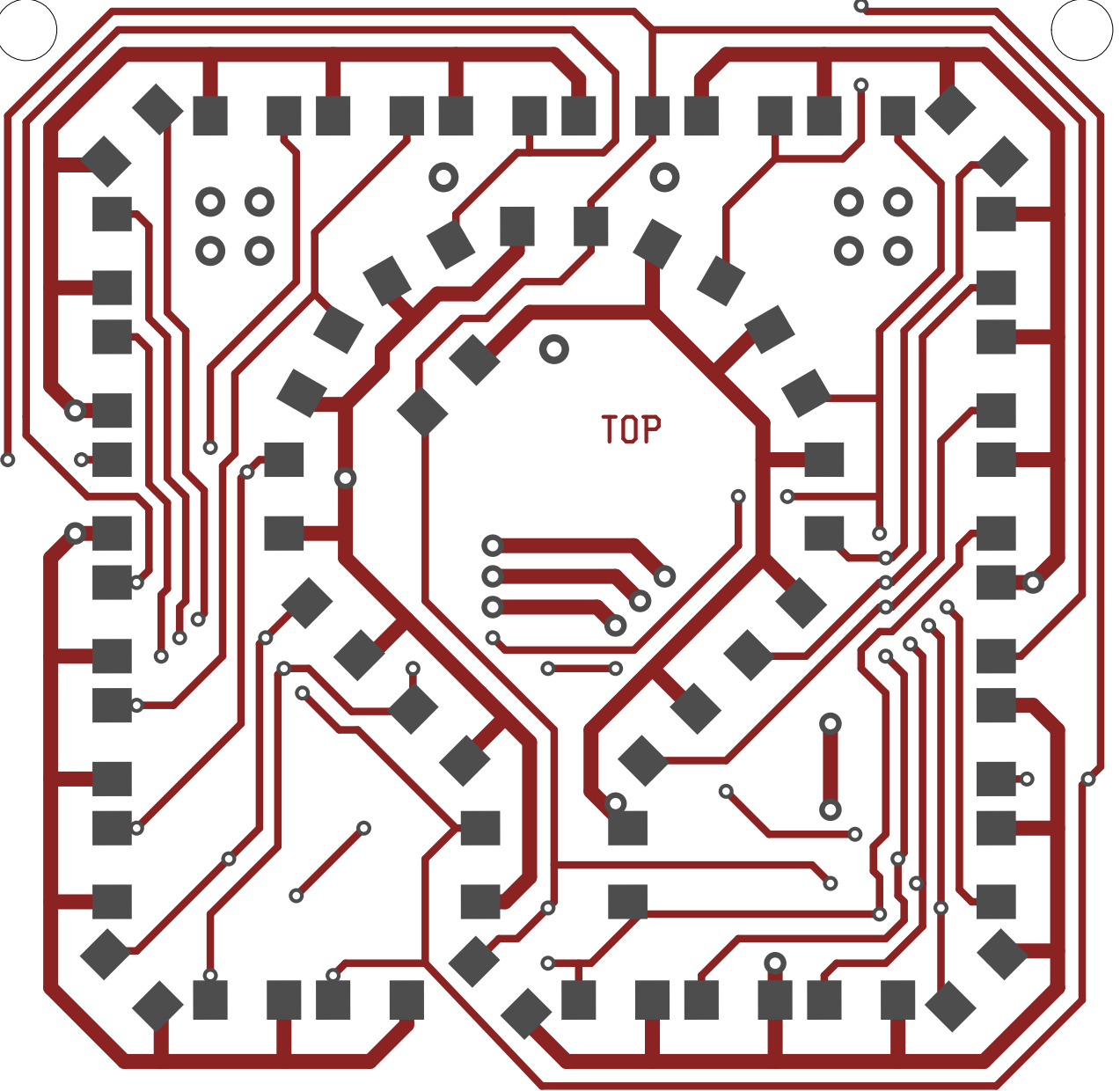
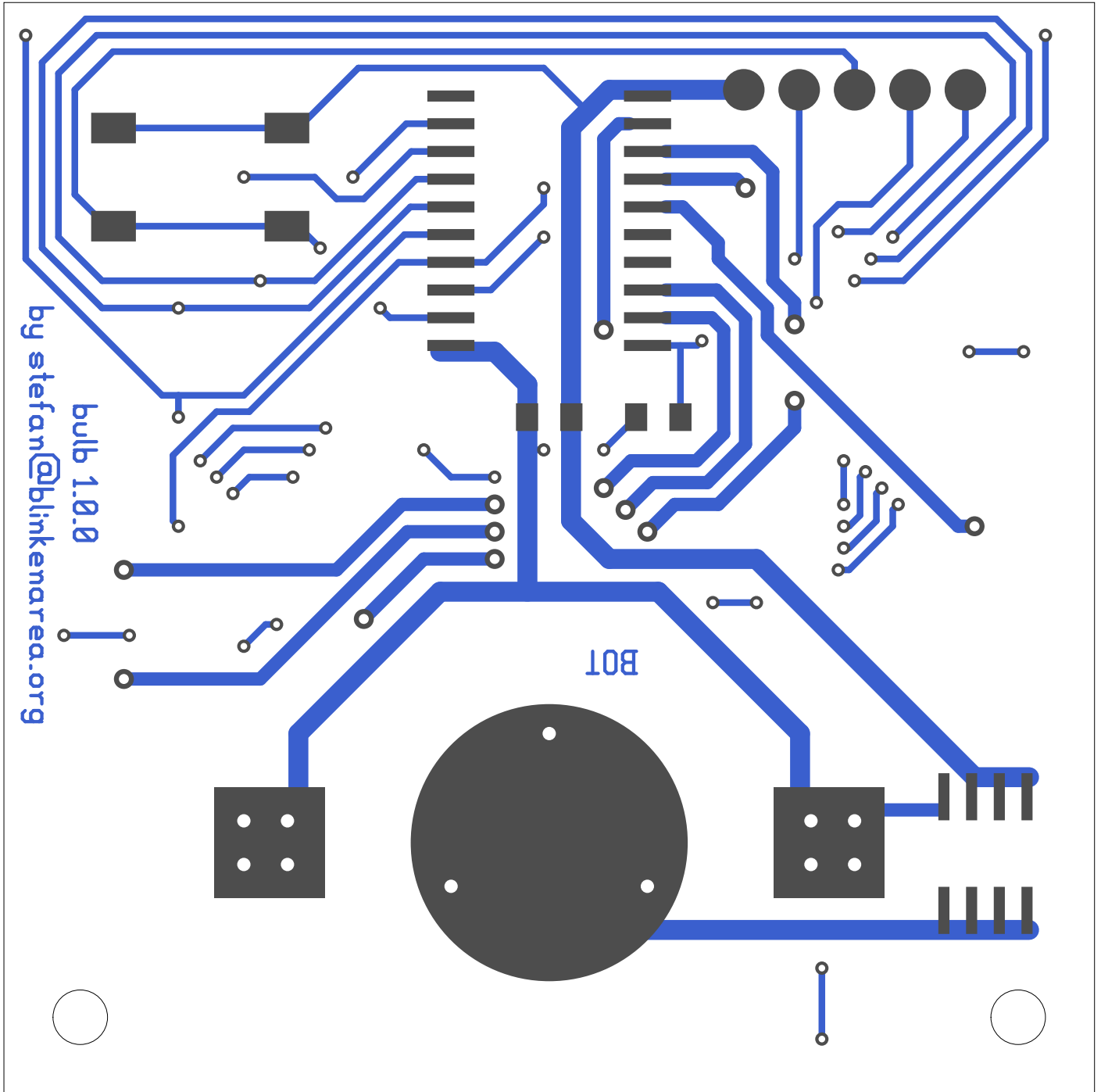


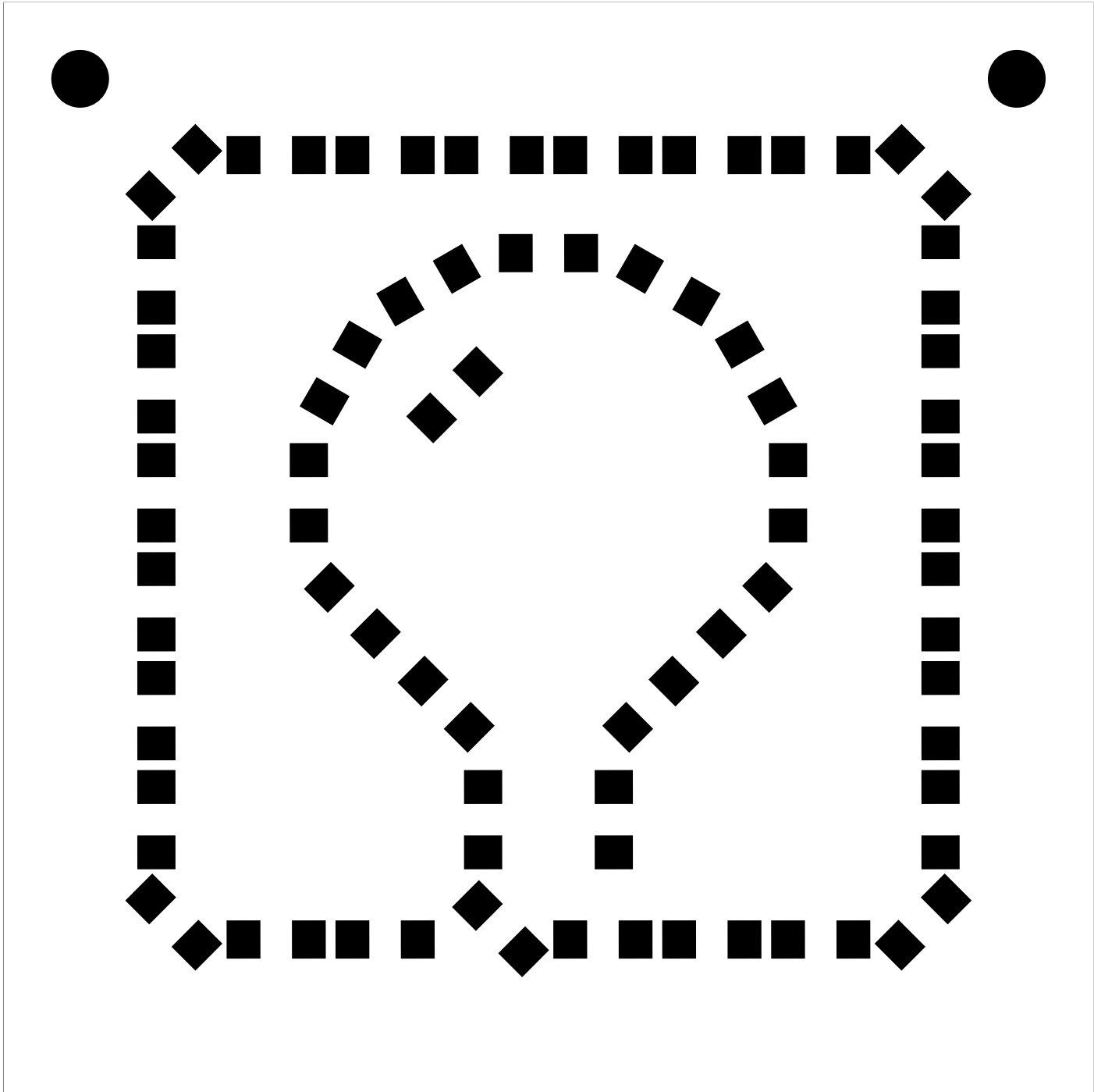
2. component
3. solder
4. componentmask
5. soldermask
6. plated-drill
7. unplated-drill
8. topsilk
9. bottomsilk
10. bottompaste
11. toppaste
12. topassembly
13. bottomassembly
14. fab

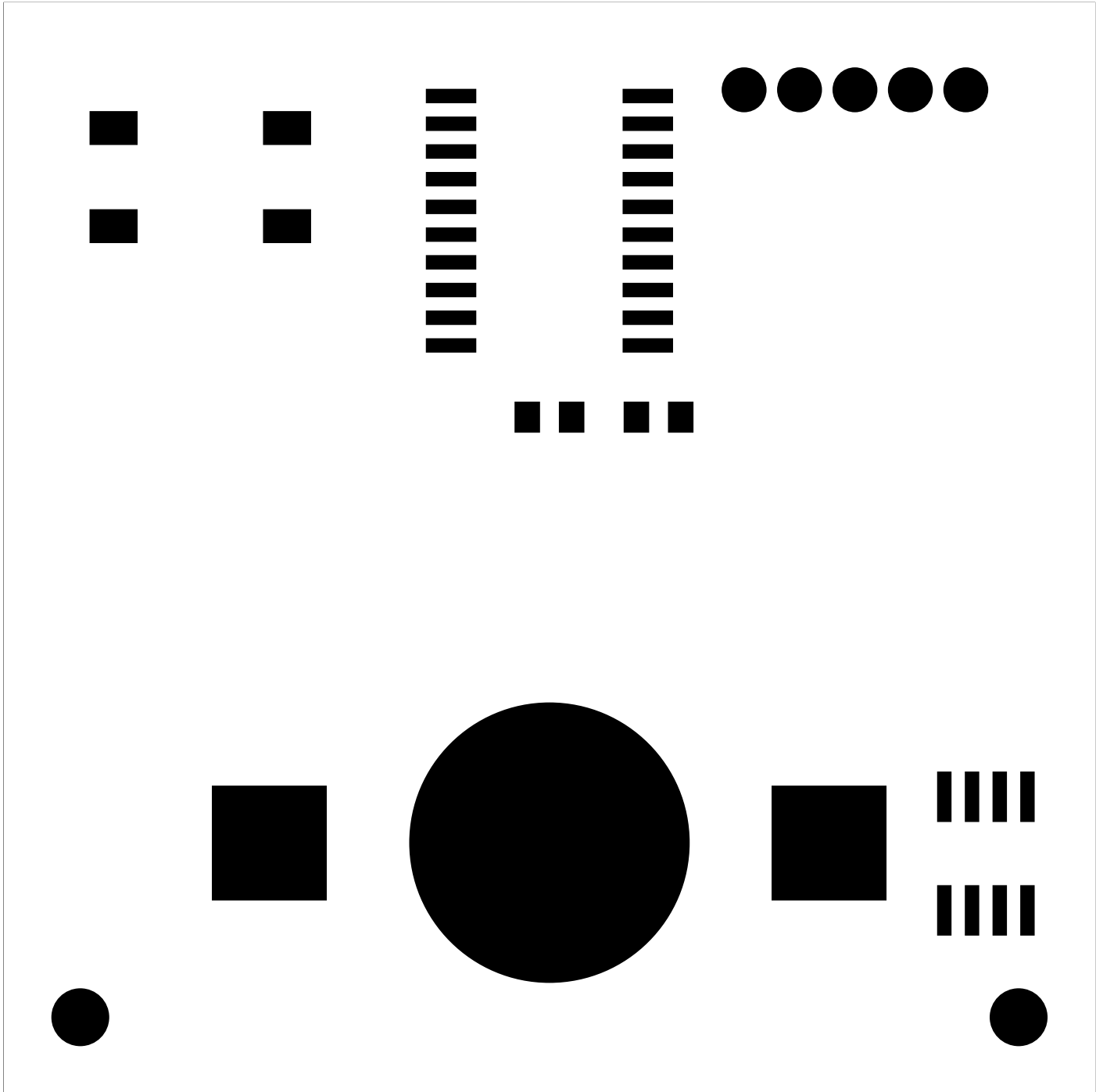
[www.blinkenarea.org](http://www.blinkenarea.org)

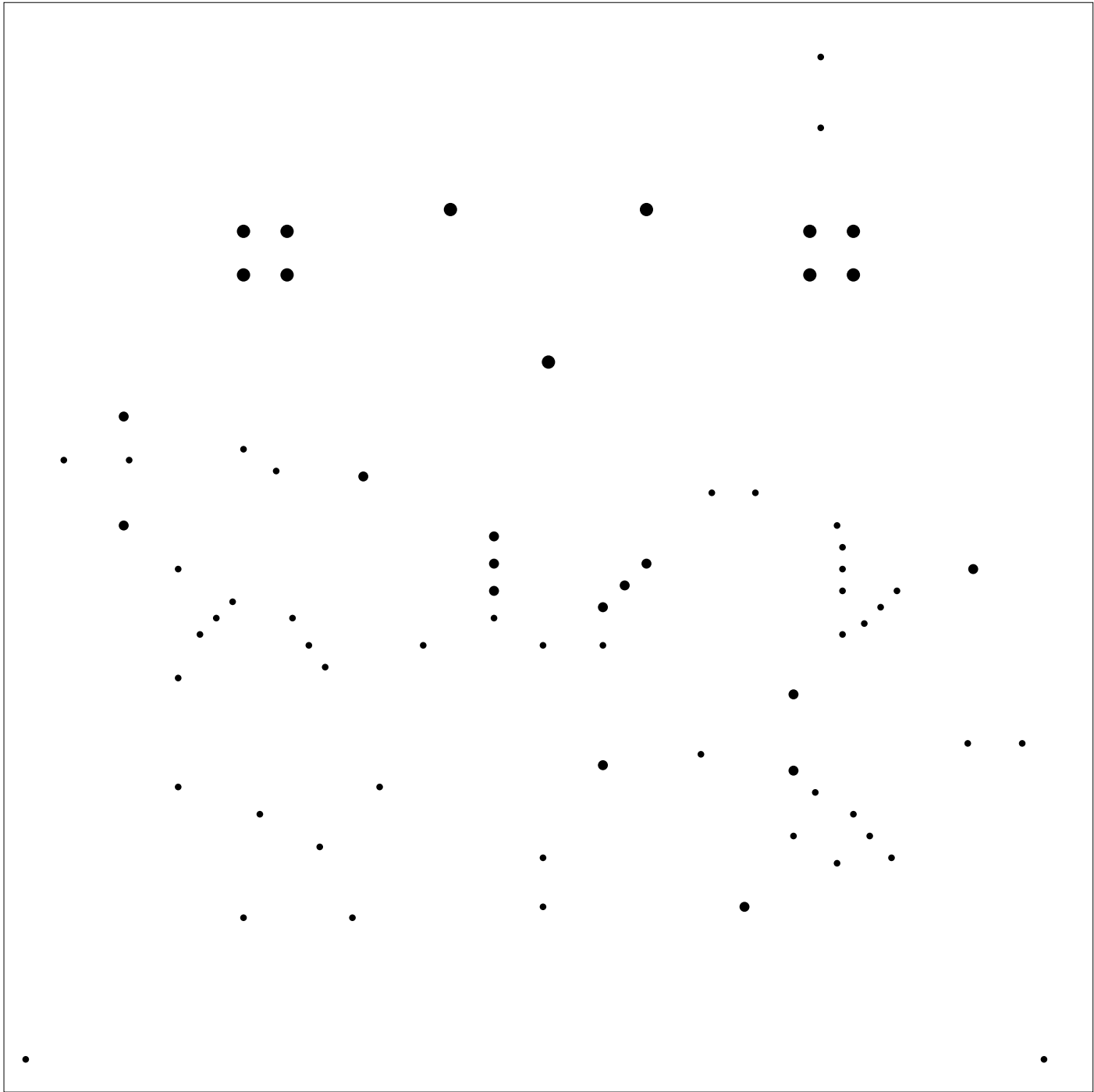


front, not to scale  
bulb.pcb

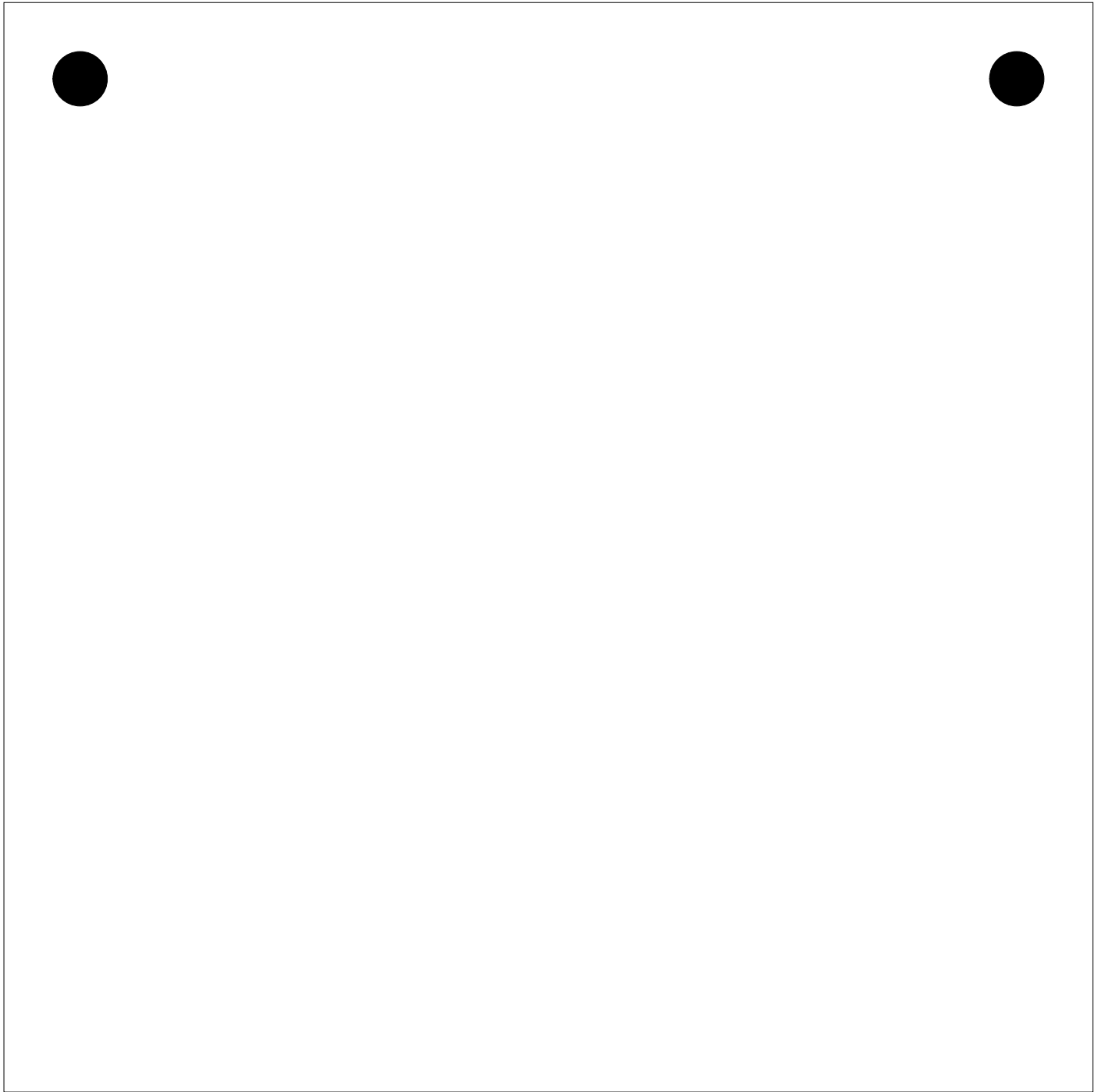




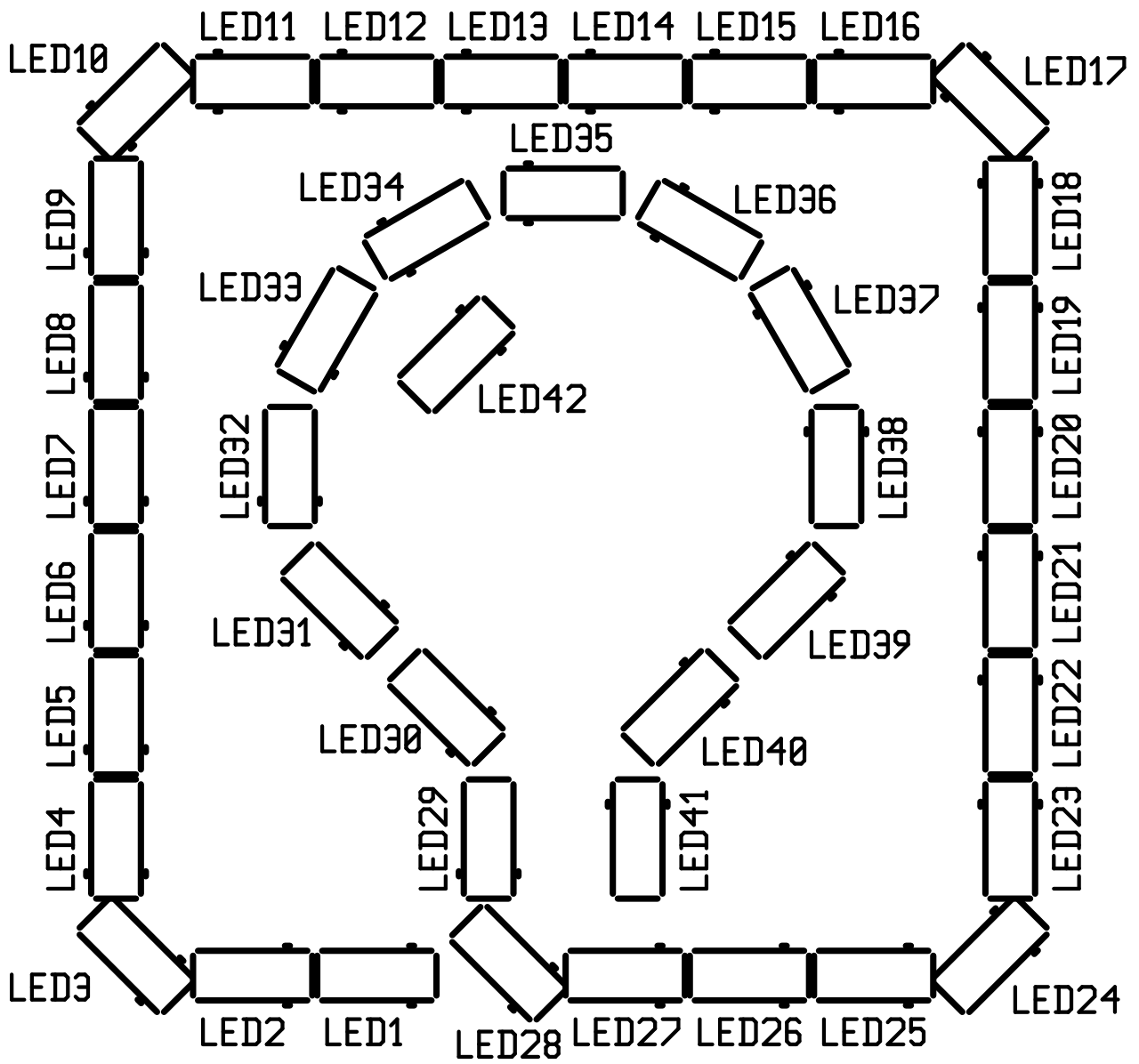




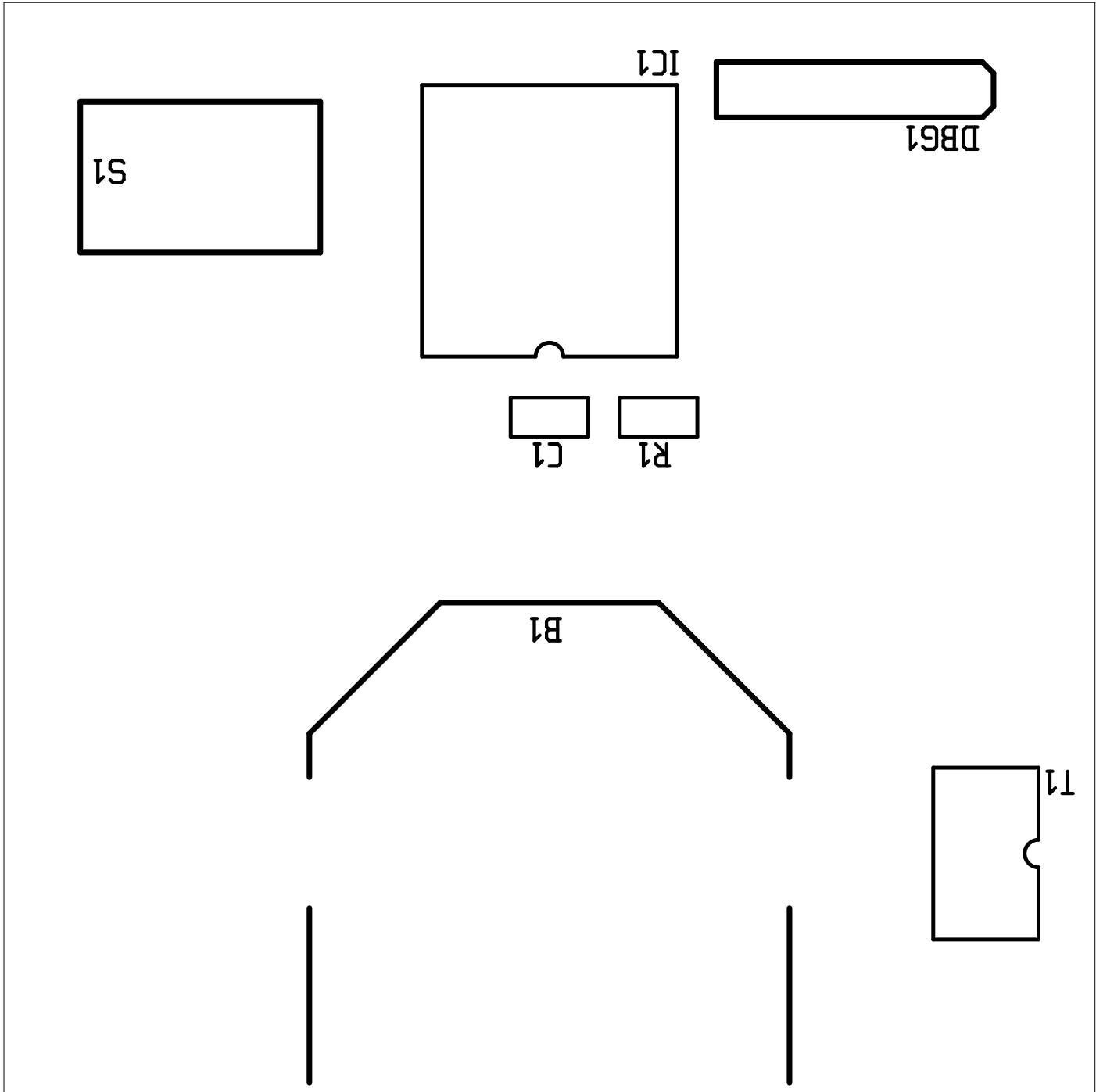
plated-drill, not to scale  
bulb.pcb

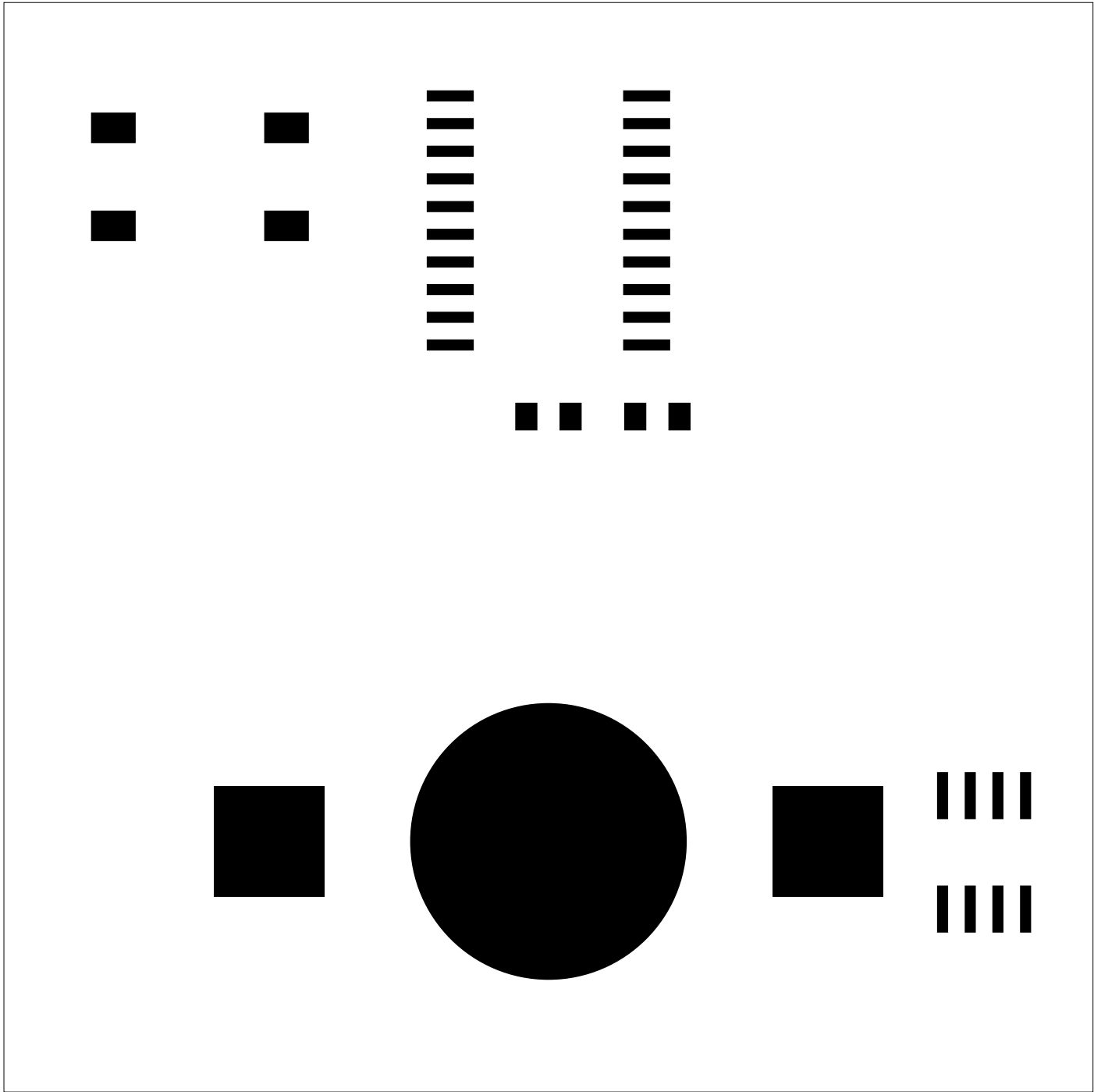


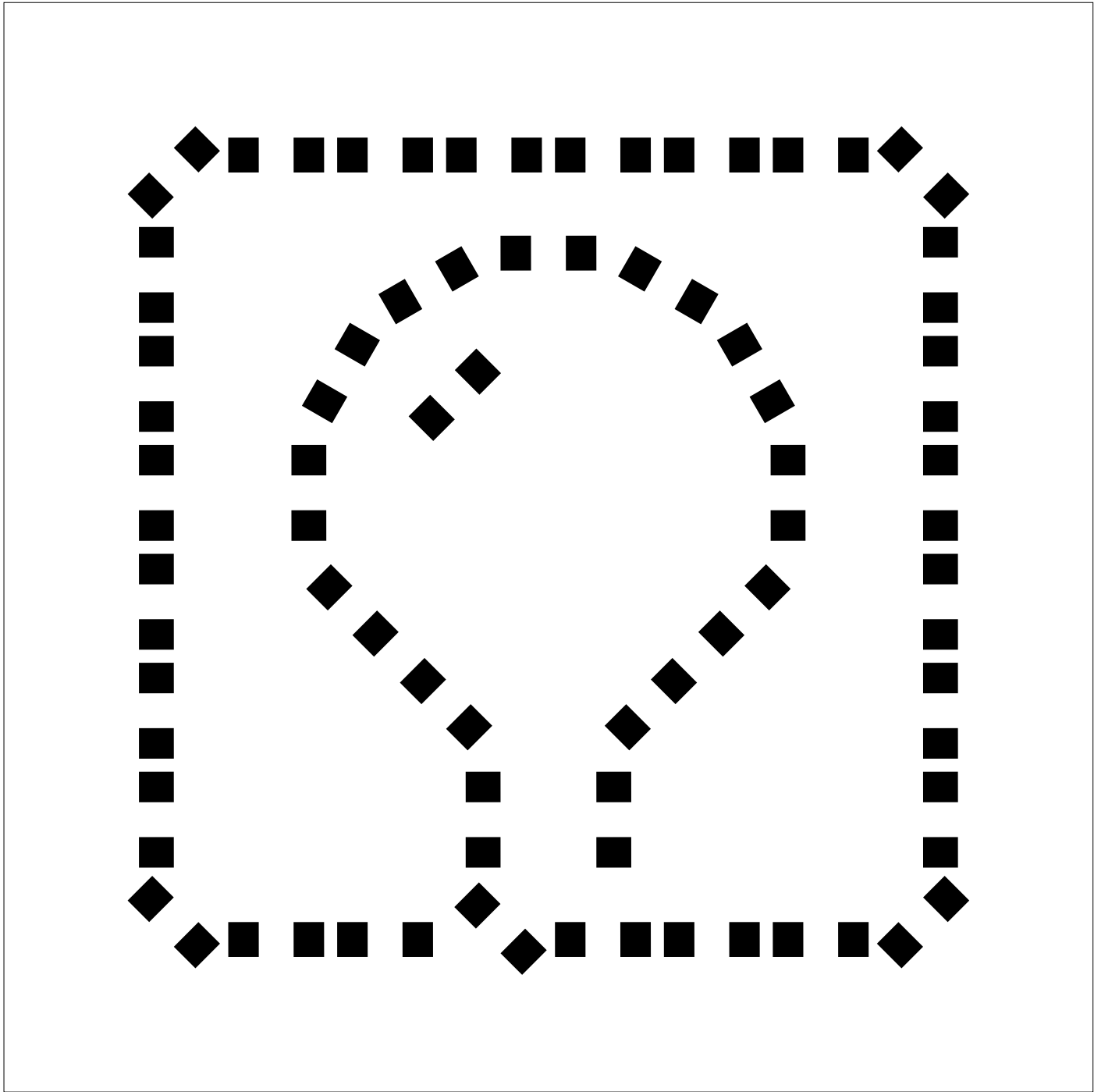
unplated-drill, not to scale  
bulb.pcb

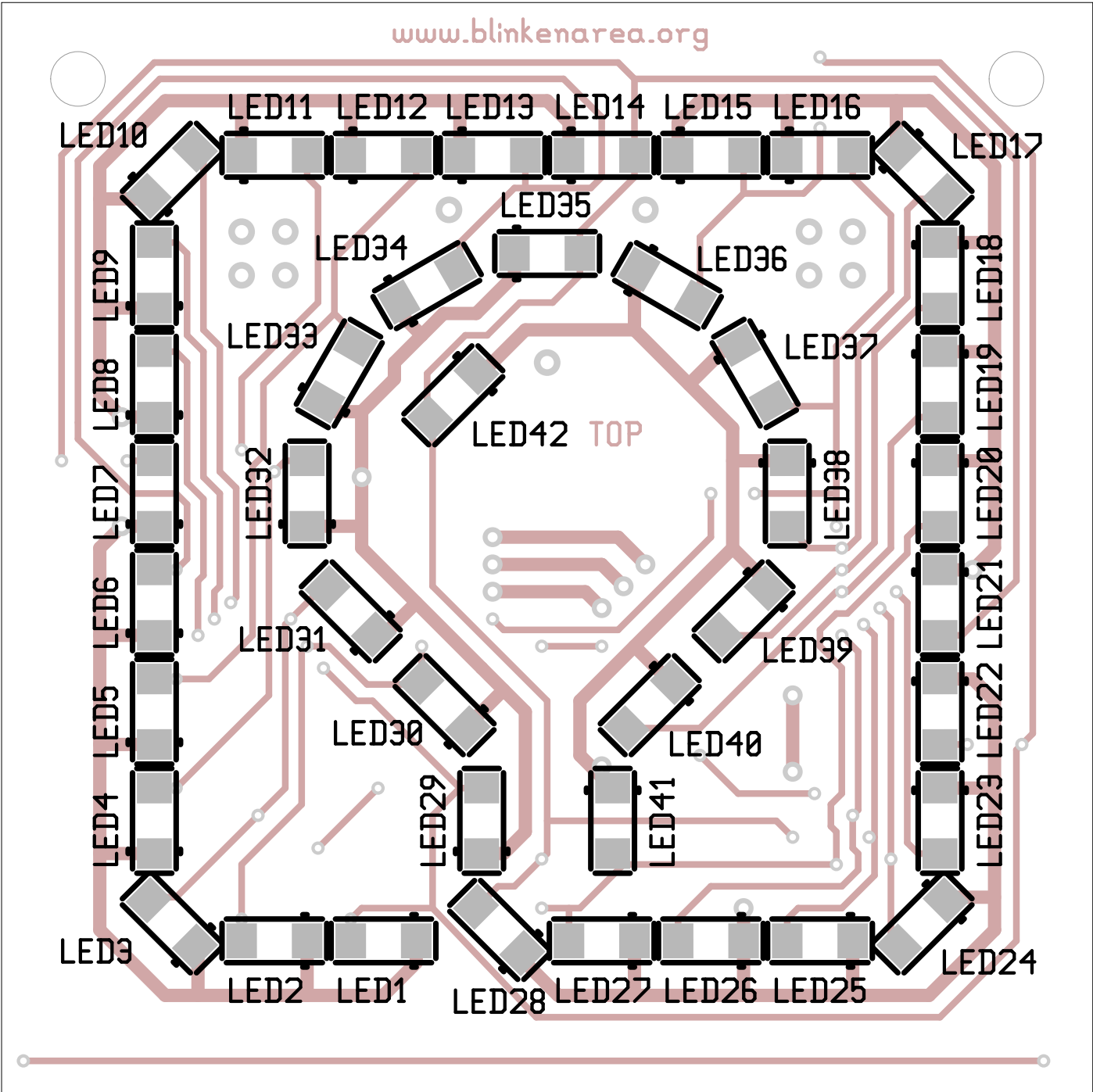


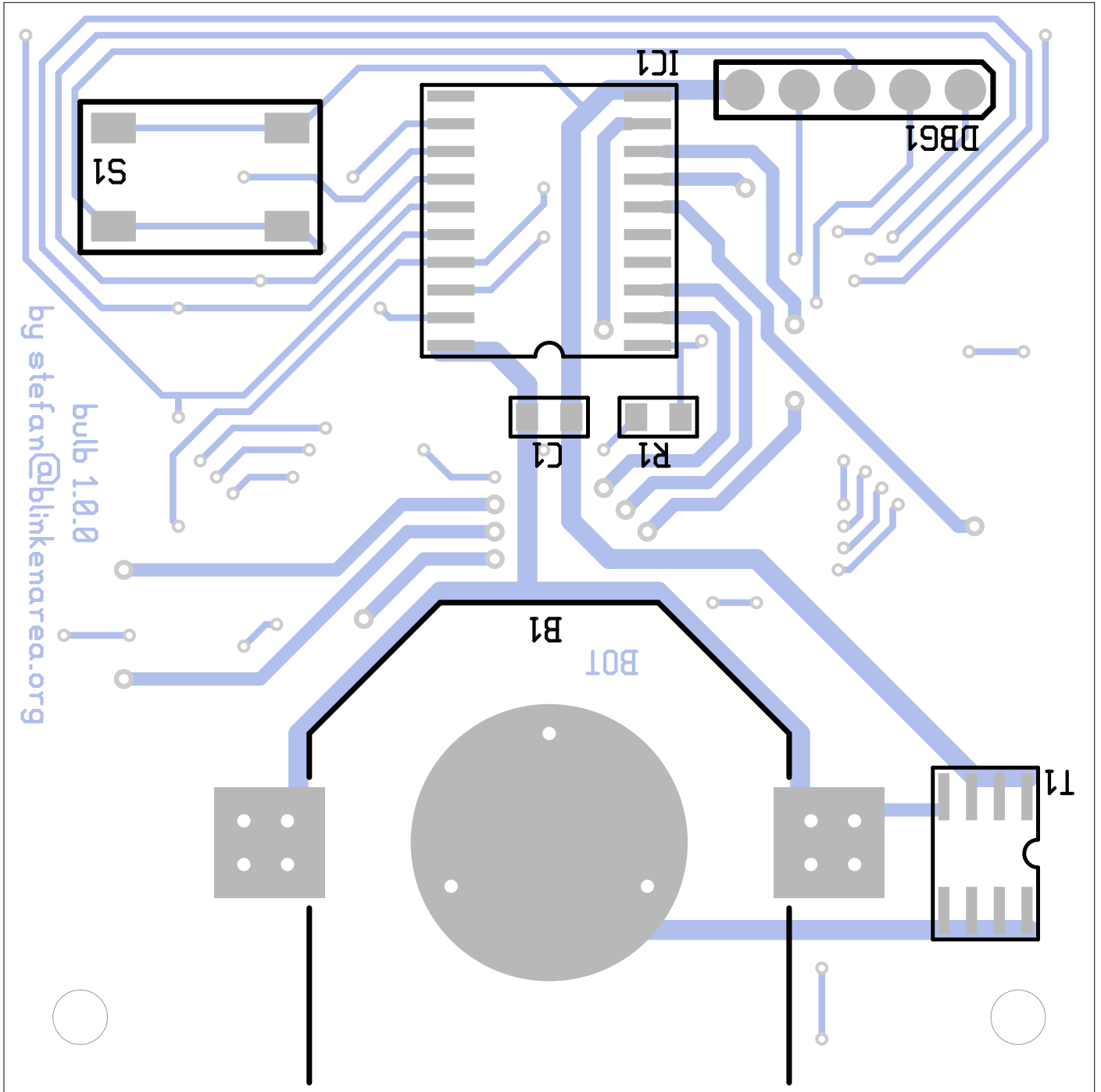












There are 4 different drill sizes used in this layout, 74 holes total

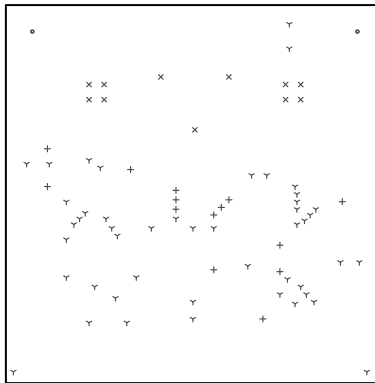
Symbol	Diam. (Inch)	Count	Plated?
Y	<u>0.012</u>	<u>47</u>	<u>YES</u>
+	<u>0.018</u>	<u>14</u>	<u>YES</u>
x	<u>0.024</u>	<u>11</u>	<u>YES</u>
o	<u>0.099</u>	<u>2</u>	<u>NO</u>

Title: (unknown) - Fabrication Drawing

Author: Stefan Schuermans

Date: Sun Jul 3 11:15:39 2011 UTC

Maximum Dimensions: 1968 mils wide, 1968 mils high



Board outline is the centerline of this 10 mil rectangle - 0,0 to 1968,1968 mils