

1. Table of Contents (This Page)
Created on Thu Jun 7 17:19:07 2012

2. component

3. solder

4. milling

5. plated-drill

6. unplated-drill

7. componentmask

8. soldermask

9. topsilk

10. bottomsilk

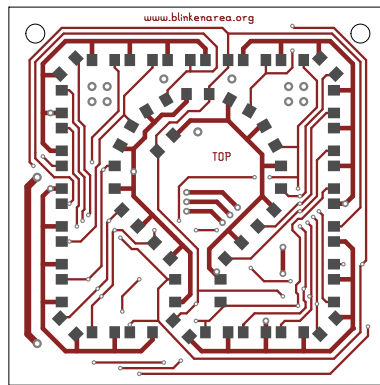
11. toppaste

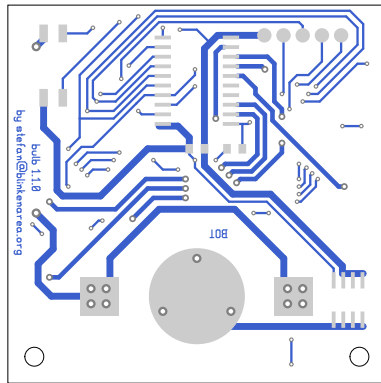
12. bottompaste

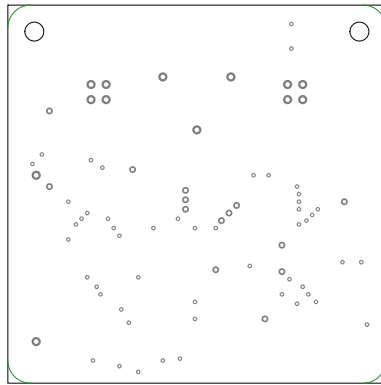
13. topassembly

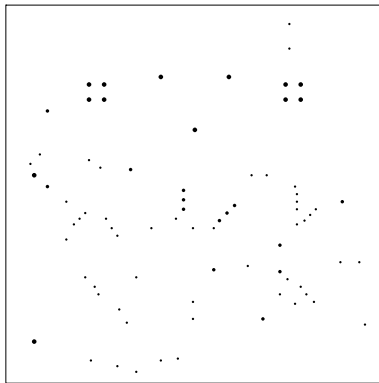
14. bottomassembly

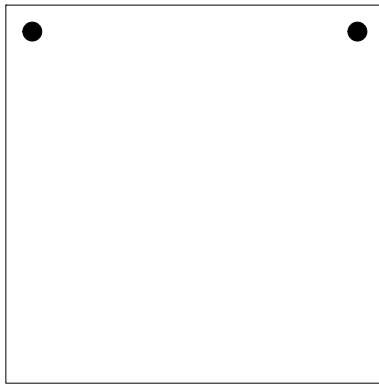
15. fab

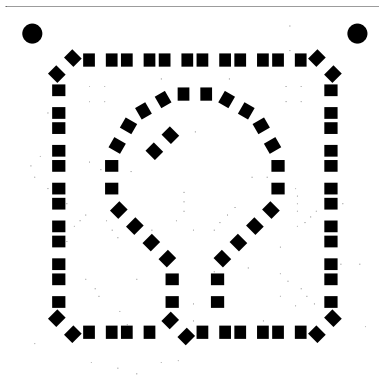


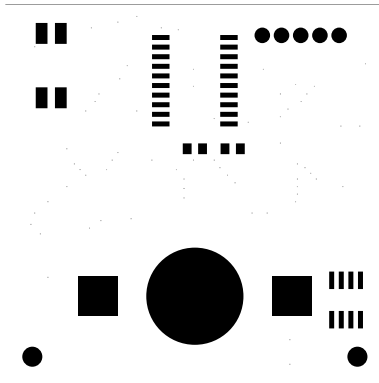


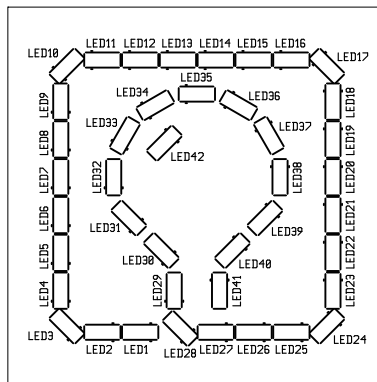


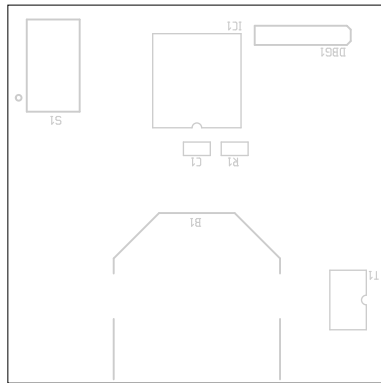


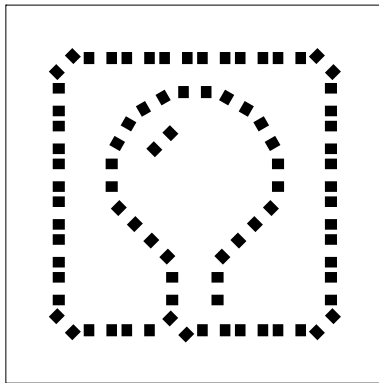


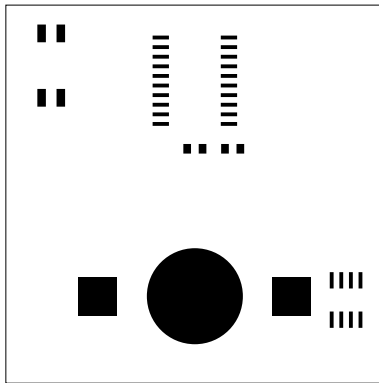


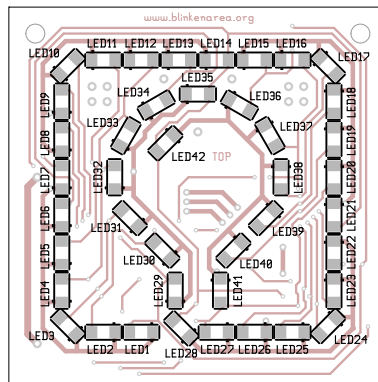


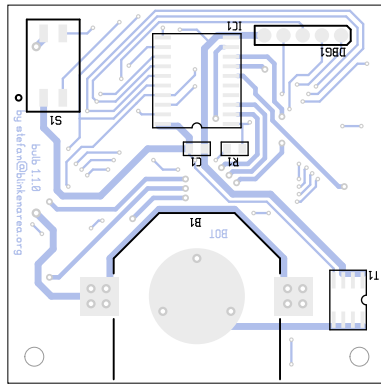






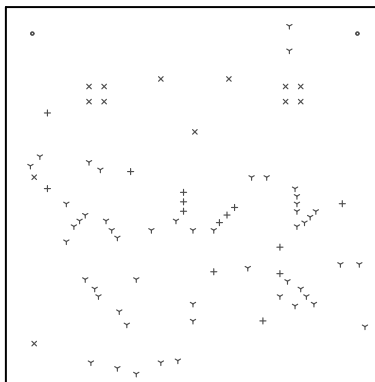






There are 4 different drill sizes used in this layout, 80 holes total

Symbol	Diam. (Inch)	Count	Plated?	
Y	0.012	51	YES	Title: bulb-1.1.0 - Fabrication Drawing
+	0.018	14	YES	Author: Stefan Schuermans
x	0.024	13	YES	Date: Do 07 Jun 2012 15:19:07 GMT UTC
o	0.099	2	NO	Maximum Dimensions: 1968.500000 mils wide, 1968.500000 mils high



Board outline is the centerline of this 8.000000 mil rectangle - 0,0 to 1968.500000,1968.500000 mils